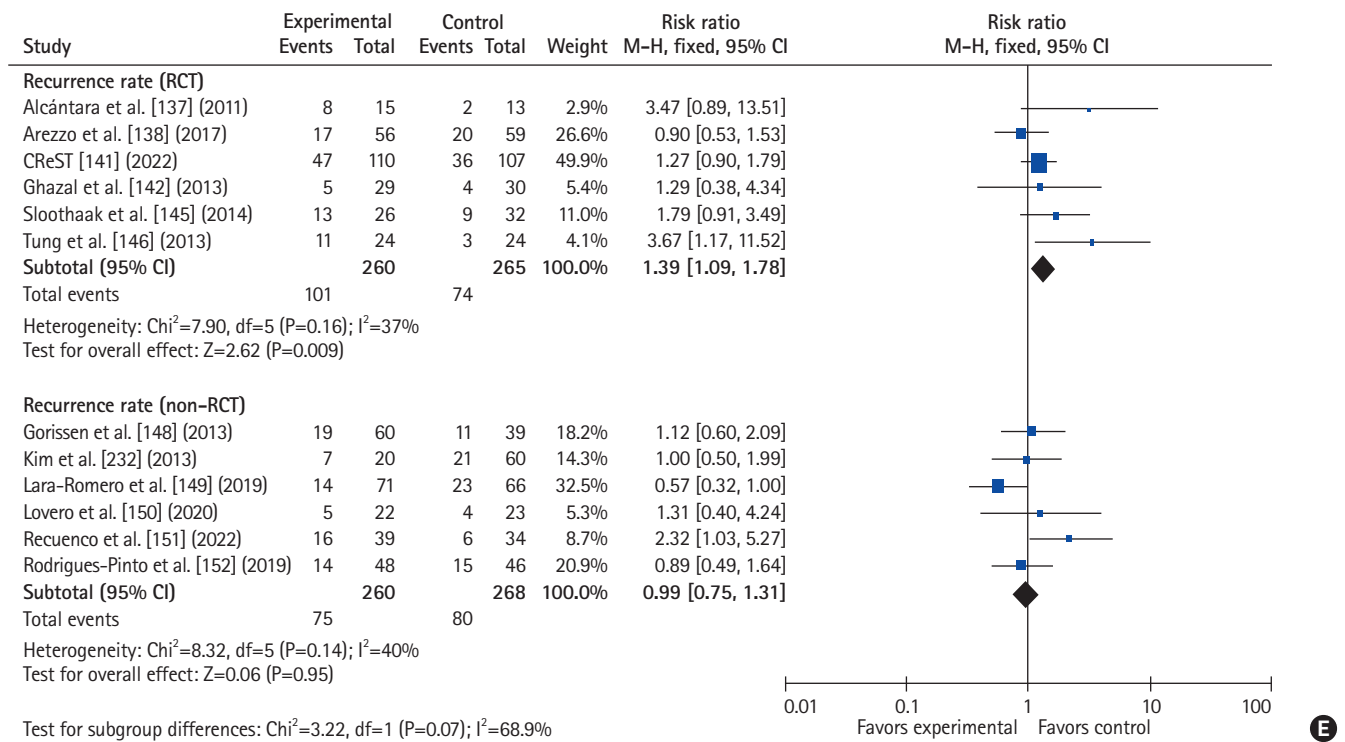
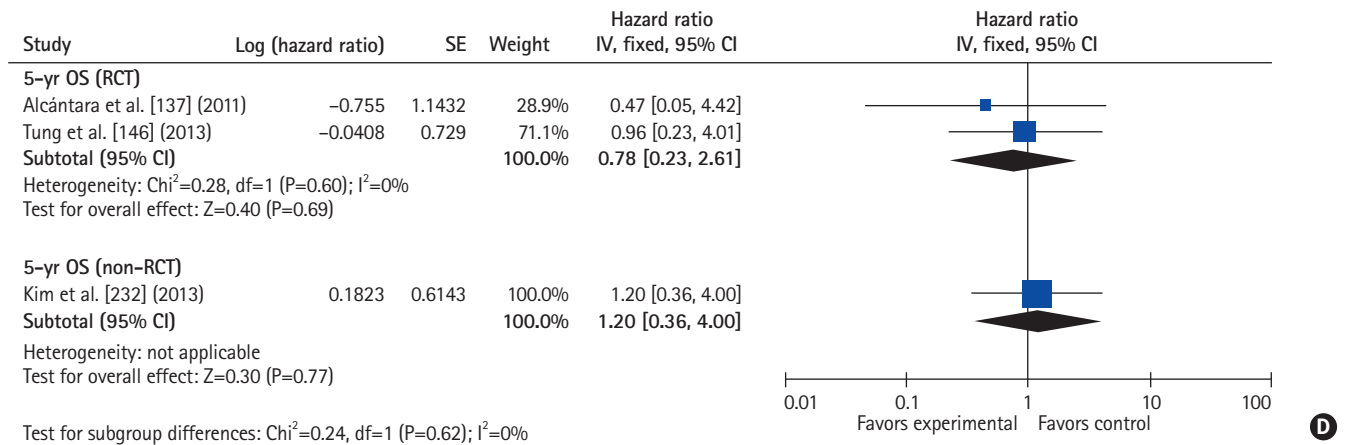


**Supplementary Fig. 12.** Forest plots of (A) 3-year disease-free survival (DFS), (B) 3-year overall survival (OS), (C) 5-year DFS, (D) 5-year OS, and (E) recurrence rate in self-expanding metallic stents versus emergency surgery for left-sided obstructive colon cancer. SE, standard error; IV, inverse variance; Random, random-effects model; CI, confidence interval; RCT, randomized controlled trial; df, degree of freedom; M-H, Mantel-Haenszel test; Fixed, fixed-effect model.



Supplementary Fig. 12. (Continued).